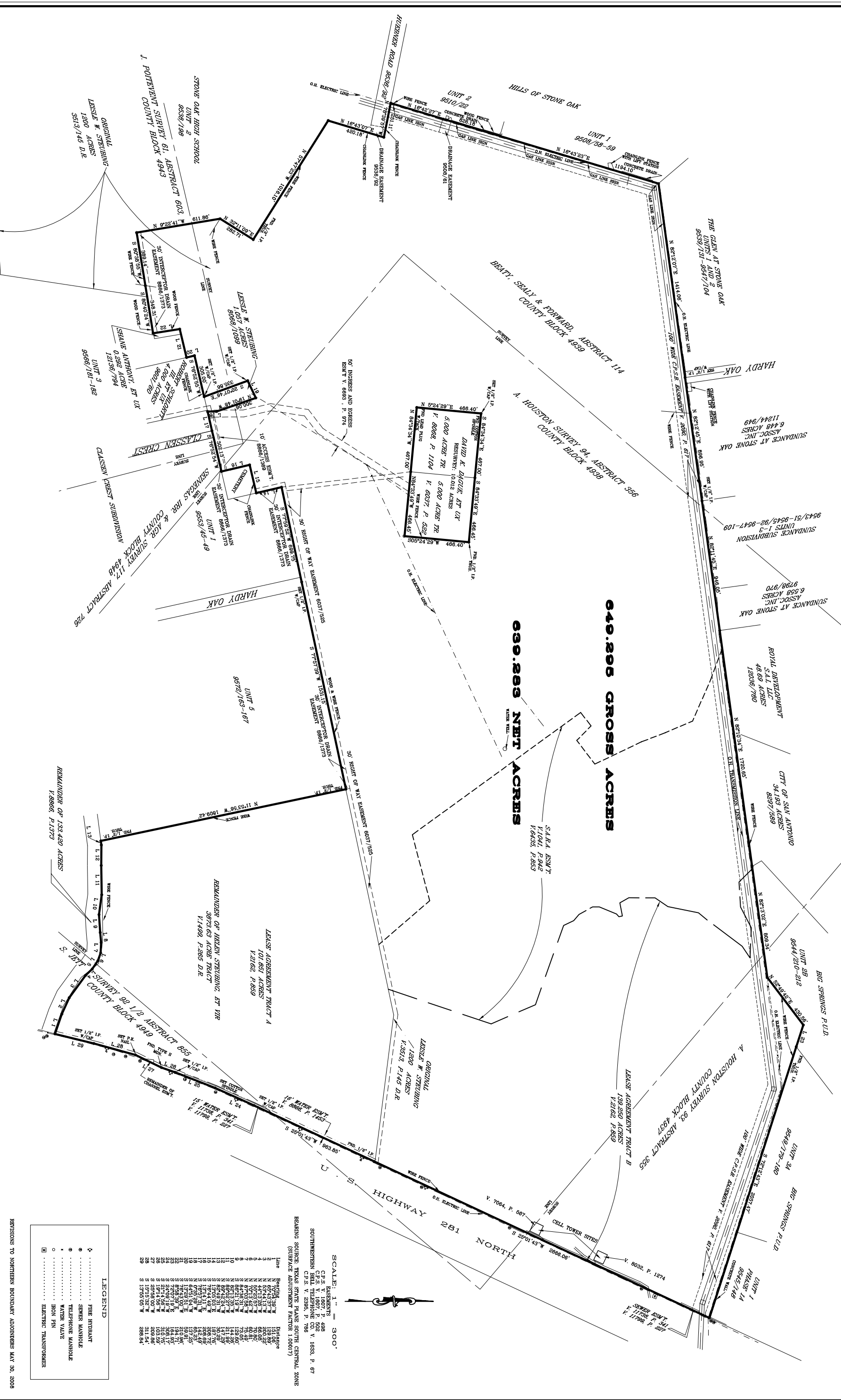


H.A. KUEHLEN SURVEY COMPANY
 14350 NORTHHERBICK DRIVE SUITE 130
 SAN ANTONIO, TEXAS 78232
 PH: (210) 490-7847
 FAX: (210) 490-7857

REGISTERED PROFESSIONAL LAND SURVEYOR
 HENRY A. KUEHLEN
 No. 285
 EXPIRES 08-31-08



PLAT OF 639.283 NET ACRES, BEING A PART OF LEASABLE W. STEUBING UNIT 2, VOLUME 5613, PAGE 145, D.R., AND A PORTION OF HELEN STEUBING UNIT 2, BY DEEDS RECORDED IN VOLUME 1489, PAGE 268 D.R., SAN ANTONIO, BEXAR COUNTY, TEXAS.
 SURVEYED: APRIL 24, 2008

REVISIONS TO NORTHERN BOUNDARY ADJUSTERS MAY 30, 2008

LEGEND

⊕	FIRE HYDRANT
○	SEWER MANHOLE
●	TELEPHONE MANHOLE
⊗	WATER VALVE
○	IRON PIN
□	ELECTRIC TRANSFORMER

SCALE: 1" = 300'

Line	Bearing	Distance
1	N 89°43'37" W	120.85'
2	N 89°43'37" W	120.85'
3	N 89°43'37" W	120.85'
4	N 89°43'37" W	120.85'
5	N 89°43'37" W	120.85'
6	N 89°43'37" W	120.85'
7	N 89°43'37" W	120.85'
8	N 89°43'37" W	120.85'
9	N 89°43'37" W	120.85'
10	N 89°43'37" W	120.85'
11	N 89°43'37" W	120.85'
12	N 89°43'37" W	120.85'
13	N 89°43'37" W	120.85'
14	N 89°43'37" W	120.85'
15	N 89°43'37" W	120.85'
16	N 89°43'37" W	120.85'
17	N 89°43'37" W	120.85'
18	N 89°43'37" W	120.85'
19	N 89°43'37" W	120.85'
20	N 89°43'37" W	120.85'
21	N 89°43'37" W	120.85'
22	N 89°43'37" W	120.85'
23	N 89°43'37" W	120.85'
24	N 89°43'37" W	120.85'
25	N 89°43'37" W	120.85'
26	N 89°43'37" W	120.85'
27	N 89°43'37" W	120.85'
28	N 89°43'37" W	120.85'
29	N 89°43'37" W	120.85'

BEARING SOURCE: TEXAS STATE PLANE SOUTH CENTRAL ZONE
 (SURFACE ADJUSTMENT FACTOR 1.00017)